



# HC Precast System

( 100 % Malaysia Technology With 6 IPs' )

Economical . Eco Friendly . Quality

## IBS RENOVATION

### In Completed HC Precast System Project



In the construction of a building, there are always 4 types of joint namely

“ L-shape ” “ T-shape ” “ Cross shape ” “ Straight joint ”

Modular shear keys ( wet joint ) No leaking & No crack

# **IBS RENOVATION**

- **70 Units Double Storey Semi-D House, Section 7, Shah Alam**
- **119 Units Double Storey Terrace House, Sec 24, Shah Alam**
- **118 Units Double Storey Terrace House, Kota Puteri, Ijok**
- **112 Units Single Storey Terrace House, Kota Puteri, Ijok**
- **156 Units Single Storey Terrace House, Kota Puteri, Ijok**

**IBS renovation in completed HC Precast System project**



**70 Units Double Storey Semi-D House, Section 7, Shah Alam**

**IBS renovation in completed HC Precast System project**



**70 Units Double Storey Semi-D House, Section 7, Shah Alam**

**IBS renovation in completed HC Precast System project**



**70 Units Double Storey Semi-D House, Section 7, Shah Alam**

# IBS renovation in completed HC Precast System project

Renovated



70 Units Double Storey Semi-D House, Section 7, Shah Alam

**IBS renovation in completed HC Precast System project**



**70 Units Double Storey Semi-D House, Section 7, Shah Alam**

**IBS renovation in completed HC Precast System project**



**Renovated**

**70 Units Double Storey Semi-D House, Section 7, Shah Alam**



**IBS renovation in completed HC Precast System project**



**Renovated**

**70 Units Double Storey Semi-D House, Section 7, Shah Alam**

**IBS renovation in completed HC Precast System project**



**70 Units Double Storey Semi-D House, Section 7, Shah Alam**

**IBS renovation in completed HC Precast System project**



**119 Units Double Storey Terrace House, Sec 24, Shah Alam**

**IBS renovation in completed HC Precast System project**



**Original**

**119 Units Double Storey Terrace House, Sec 24, Shah Alam**

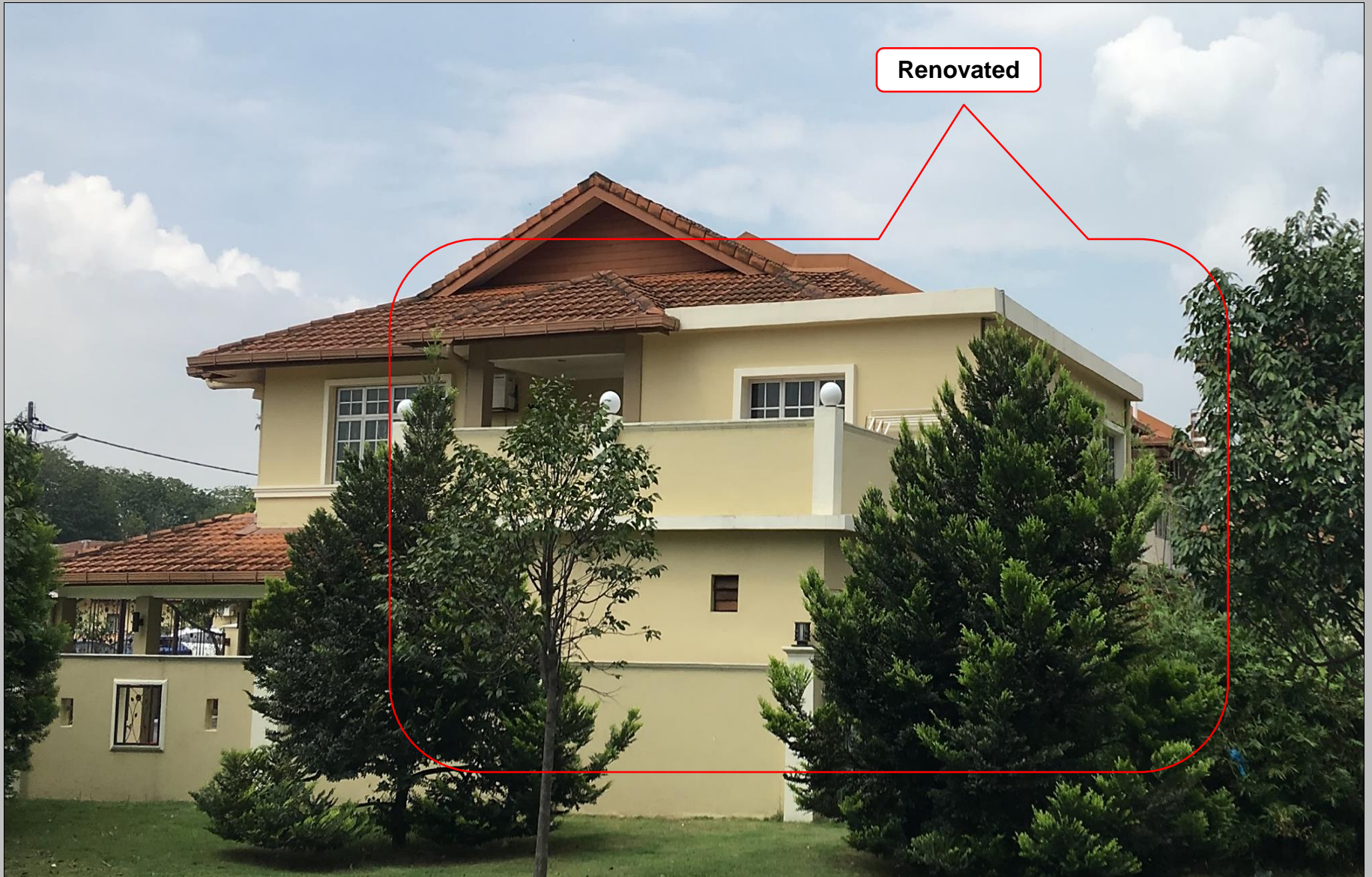
**IBS renovation in completed HC Precast System project**



**Renovated**

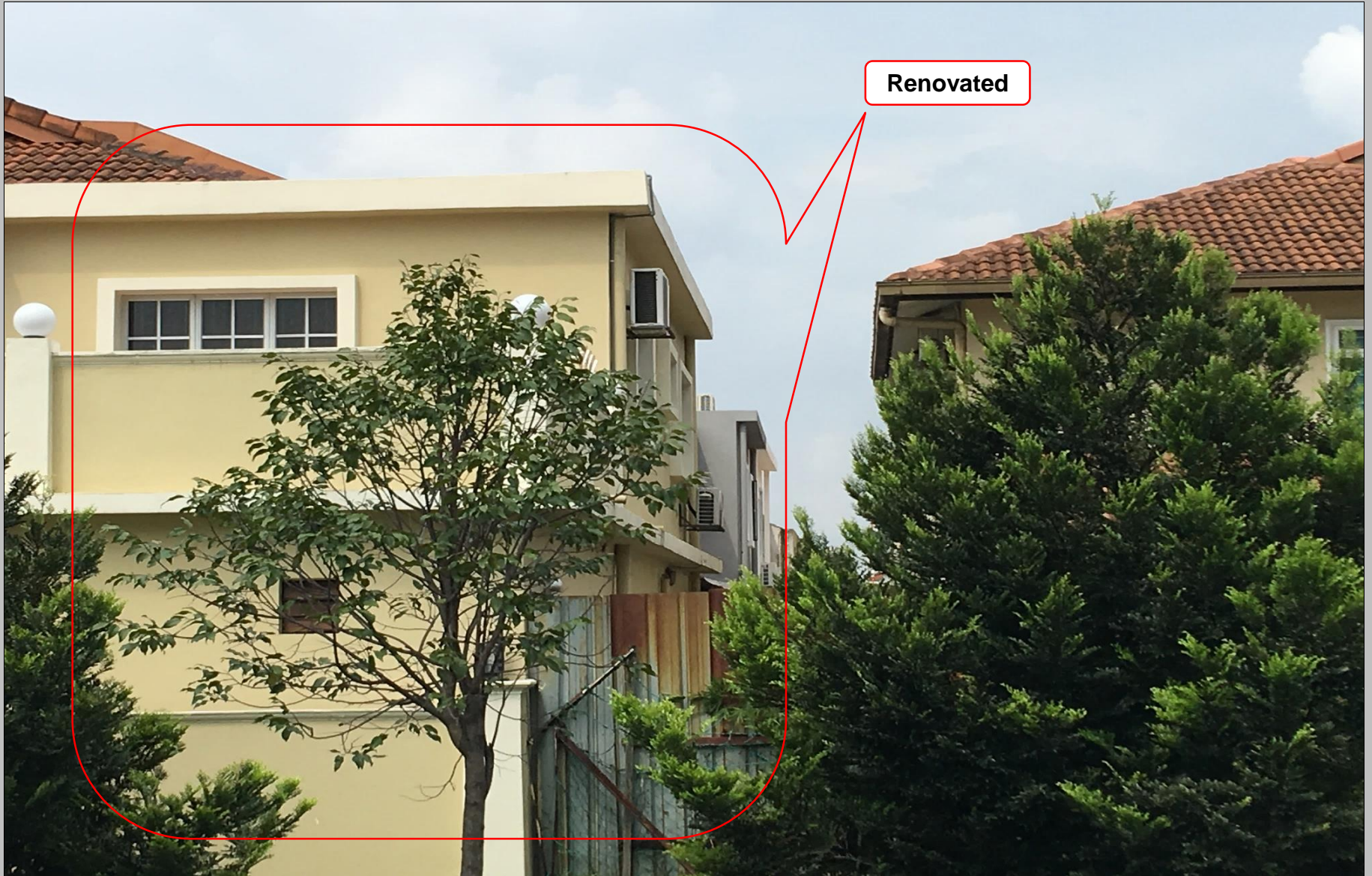
**119 Units Double Storey Terrace House, Sec 24, Shah Alam**

**IBS renovation in completed HC Precast System project**



**119 Units Double Storey Terrace House, Sec 24, Shah Alam**

**IBS renovation in completed HC Precast System project**



**119 Units Double Storey Terrace House, Sec 24, Shah Alam**

**IBS renovation in completed HC Precast System project**



**119 Units Double Storey Terrace House, Sec 24, Shah Alam**



**IBS renovation in completed HC Precast System project**



**119 Units Double Storey Terrace House, Sec 24, Shah Alam**

**IBS renovation in completed HC Precast System project**



**119 Units Double Storey Terrace House, Sec 24, Shah Alam**

**IBS renovation in completed HC Precast System project**



**119 Units Double Storey Terrace House, Sec 24, Shah Alam**

**IBS renovation in completed HC Precast System project**



**Original**

**118 Units Double Storey Terrace House, Kota Puteri, Ijok**

**IBS renovation in completed HC Precast System project**



**Original**

**118 Units Double Storey Terrace House, Kota Puteri, Ijok**

**IBS renovation in completed HC Precast System project**



**Original**

**118 Units Double Storey Terrace House, Kota Puteri, Ijok**

**IBS renovation in completed HC Precast System project**



**Original**

**118 Units Double Storey Terrace House, Kota Puteri, Ijok**

**IBS renovation in completed HC Precast System project**



**118 Units Double Storey Terrace House, Kota Puteri, Ijok**



**IBS renovation in completed HC Precast System project**



**118 Units Double Storey Terrace House, Kota Puteri, Ijok**

**IBS renovation in completed HC Precast System project**

Renovated



**118 Units Double Storey Terrace House, Kota Puteri, Ijok**

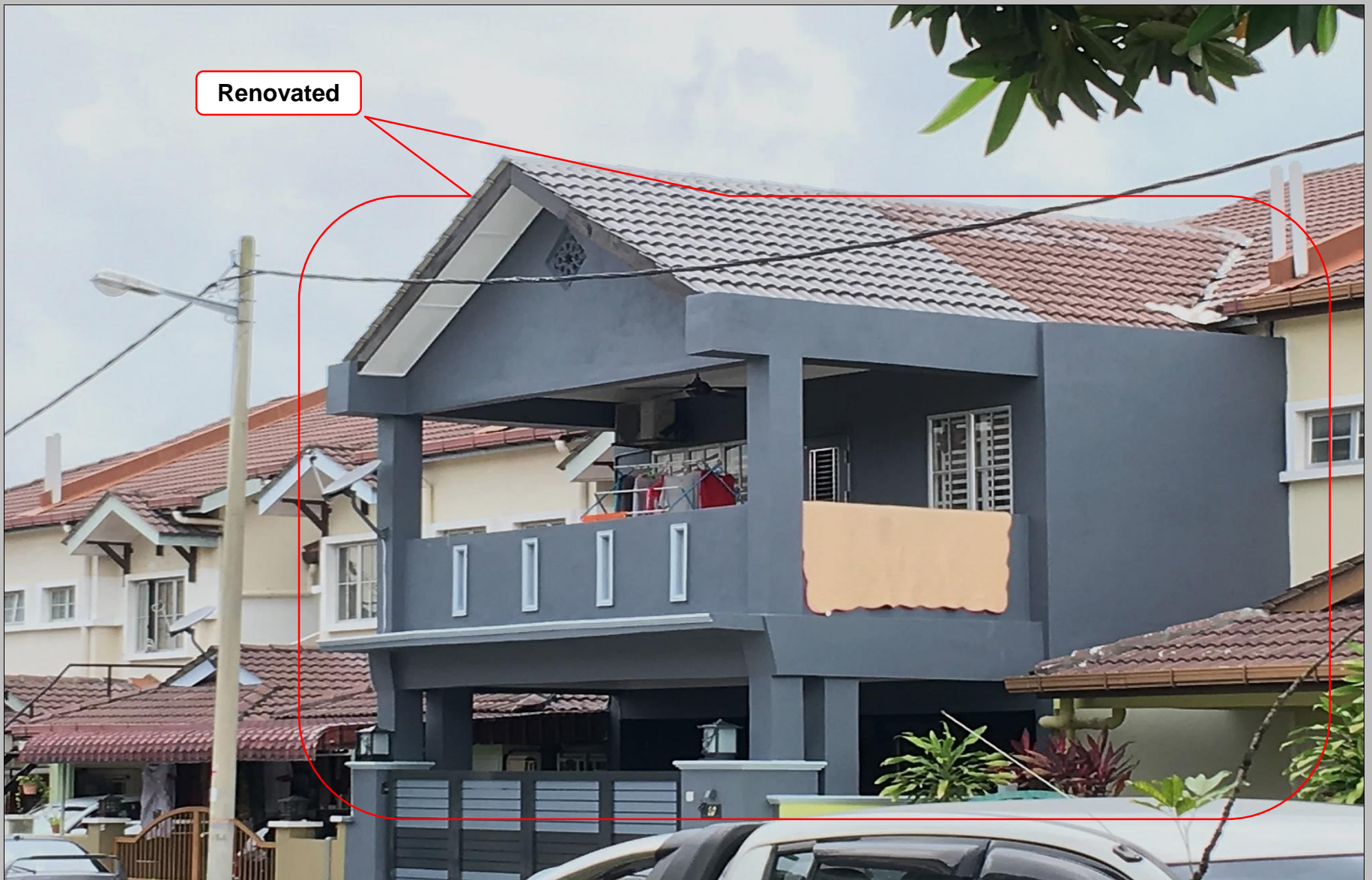
**IBS renovation in completed HC Precast System project**



**Renovated**

**118 Units Double Storey Terrace House, Kota Puteri, Ijok**

**IBS renovation in completed HC Precast System project**



**118 Units Double Storey Terrace House, Kota Puteri, Ijok**

**IBS renovation in completed HC Precast System project**



**Renovated**

**118 Units Double Storey Terrace House, Kota Puteri, Ijok**

**IBS renovation in completed HC Precast System project**



**Renovated**

**118 Units Double Storey Terrace House, Kota Puteri, Ijok**

**IBS renovation in completed HC Precast System project**



**Renovated**

**118 Units Double Storey Terrace House, Kota Puteri, Ijok**

**IBS renovation in completed HC Precast System project**



**Original**

**112 Units Single Storey Terrace House, Kota Puteri, Ijok**



**IBS renovation in completed HC Precast System project**



**Original**

**112 Units Single Storey Terrace House, Kota Puteri, Ijok**

**IBS renovation in completed HC Precast System project**



**112 Units Single Storey Terrace House, Kota Puteri, Ijok**

**IBS renovation in completed HC Precast System project**



**112 Units Single Storey Terrace House, Kota Puteri, Ijok**

**IBS renovation in completed HC Precast System project**



**Renovated**

**112 Units Single Storey Terrace House, Kota Puteri, Ijok**

**IBS renovation in completed HC Precast System project**



**Renovated**

**112 Units Single Storey Terrace House, Kota Puteri, Ijok**

**IBS renovation in completed HC Precast System project**



**112 Units Single Storey Terrace House, Kota Puteri, Ijok**

**IBS renovation in completed HC Precast System project**



**156 Units Single Storey Terrace House, Kota Puteri, Ijok**

**IBS renovation in completed HC Precast System project**



**156 Units Single Storey Terrace House, Kota Puteri, Ijok**



**IBS renovation in completed HC Precast System project**



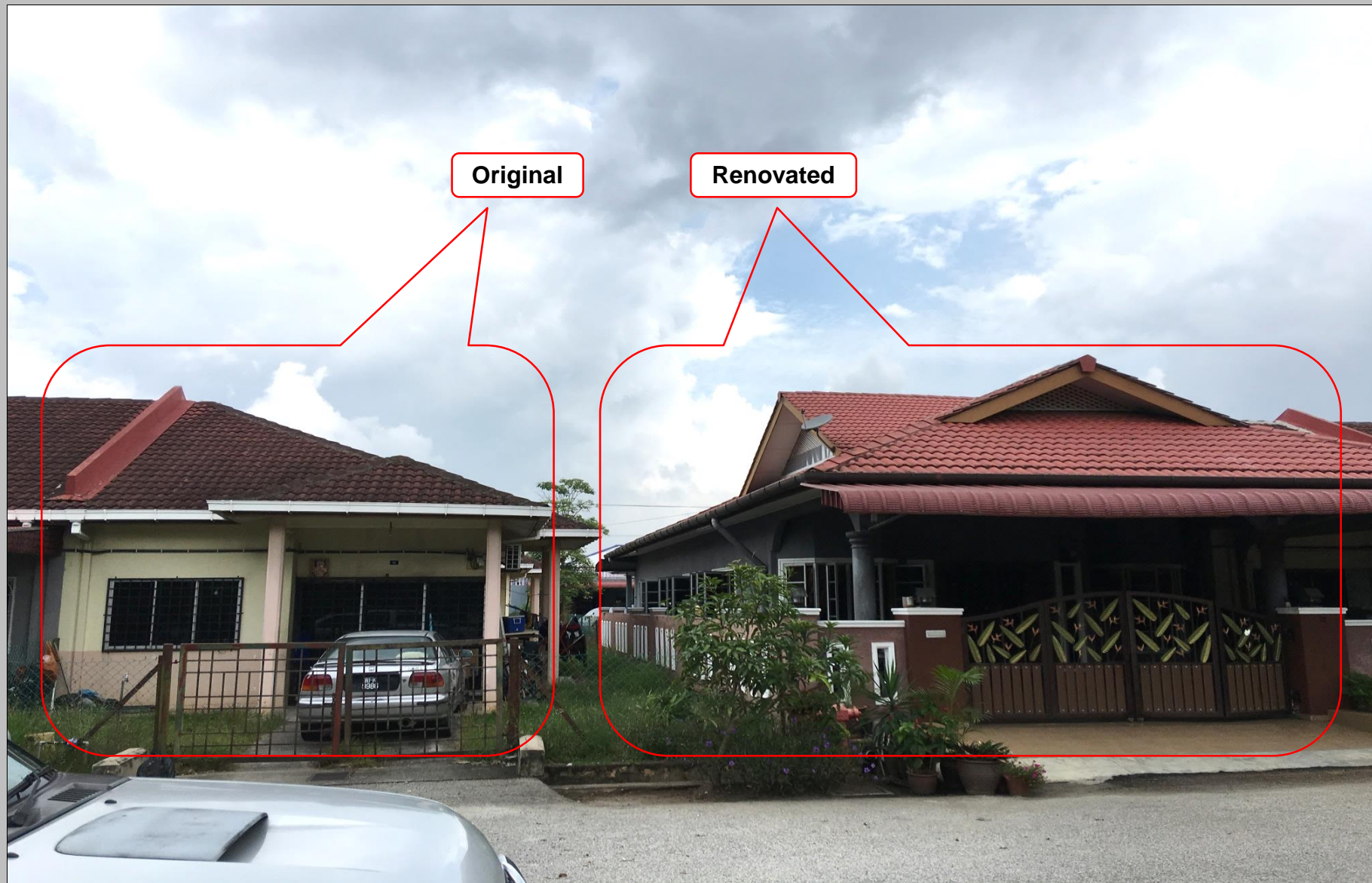
**156 Units Single Storey Terrace House, Kota Puteri, Ijok**

**IBS renovation in completed HC Precast System project**



**156 Units Single Storey Terrace House, Kota Puteri, Ijok**

**IBS renovation in completed HC Precast System project**



**156 Units Single Storey Terrace House, Kota Puteri, Ijok**



**THANK YOU**

